

PARANOID - BLACK SABBATH

Musical notation for the first line of the song, measures 1-4. It features a 4/4 time signature and a series of eighth notes on a single staff.

5 VERSE

Musical notation for the second line of the song, measures 5-8. It continues the eighth-note pattern from the first line.

9

Musical notation for the third line of the song, measures 9-12. It continues the eighth-note pattern.

13

Musical notation for the fourth line of the song, measures 13-16. It continues the eighth-note pattern.

17

Musical notation for the fifth line of the song, measures 17-20. It continues the eighth-note pattern.

21 VERSE 2

Musical notation for the sixth line of the song, measures 21-28. It consists of a series of diagonal slashes representing a distorted instrumental.

"ALL DAY LONG I THINK..."

29

Musical notation for the seventh line of the song, measures 29-32. It returns to the eighth-note pattern.

"CAN YOU HEAR ME?"

33

Musical notation for the eighth line of the song, measures 33-36. It continues the eighth-note pattern.

37 VERSE 3

Musical notation for the ninth line of the song, measures 37-44. It consists of a series of diagonal slashes representing a distorted instrumental.

INSTRUMENTAL

45 VERSE 4

Musical notation for the tenth line of the song, measures 45-52. It consists of a series of diagonal slashes representing a distorted instrumental.

"I NEED SOMEONE TO SHOW ME..."

53 VERSE 5

Musical notation for the eleventh line of the song, measures 53-60. It consists of a series of diagonal slashes representing a distorted instrumental.

INSTRUMENTAL - DISTORTED

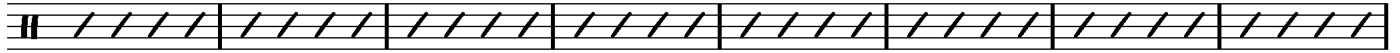
61 VERSE 6

Musical notation for the twelfth line of the song, measures 61-68. It consists of a series of diagonal slashes representing a distorted instrumental.

INSTRUMENTAL - DISTORTED

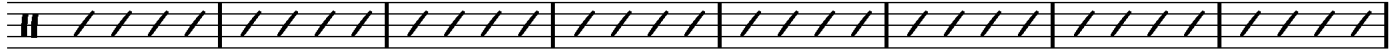
PARANOID PG 2

69 VERSE 7

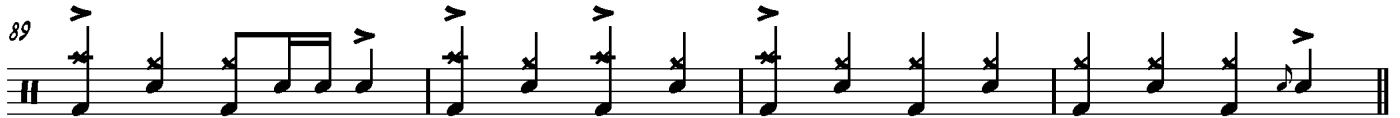


INSTRUMENTAL - REGULAR

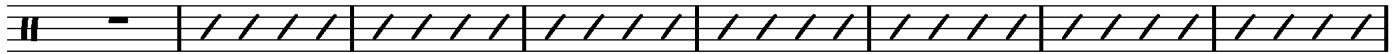
77 VERSE 8



"MAKE A JOKE..."

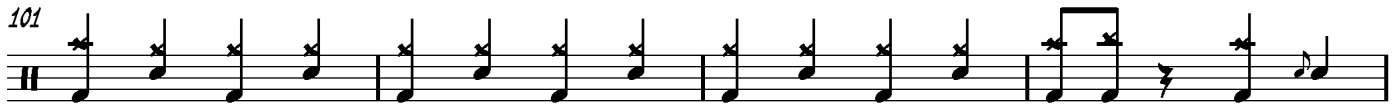


93 VERSE 9



"AND SO AS YOU HEAR THESE WORDS..."

VERSE 10



INSTRUMENTAL

